



SHOOT IN EUROPE

POLAND - SERBIA - SPAIN - UK

ABOUT US

We are an energetic production house producing projects ranging from documentary and feature films through commercials and music videos. Our portfolio includes productions such as “Robert Mitchum est mort”, “Cojones”, “Road Home”, “Honza”, “100 Voices”, “Teefa in Trouble” and “Kotigobba 3” amongst others.

It's our production team that sets us apart from the rest. Its members hail from across the globe. That and their experience that allow us to produce across the continent.

Our film projects have been showcased as part of the Cannes Film Festival, The Raindance Film Festival, as the opening of the Milan Film Festival, at Mar del Plata, Thessaloniki, The Hollywood Film Festival, The Palm Beach Film Festival, the Warsaw International Film Festival and many others.





ABOUT US

The other facet of our work is advertising. We have collaborated with big brands such as Coca-Cola, Red Bull, Nike, New Balance, Ford, and the City of London amongst others. We cooperate with advertising agencies, such as Ogilvy, M&C Saatchi and Leo Burnett. We love to challenge ourselves creatively, producing high-end aesthetics. Over the past two years, we have produced content in eighteen European countries and elsewhere across the globe. You can check out our work and the locations where we've shot at www.studioagart.com, or:





WHY POLAND?



Location

ESSENTIAL FACTS ABOUT POLAND

Filming Incentives:

Poland provides a base cash rebate of 30% of Polish applicable expenditures. The cap per project is PLN 15 million (ca. EUR 3.5 million). The application for support may be submitted if at least 75% of production financing is confirmed. A cultural qualifying test applies. It contains a set of criteria and a corresponding score. The minimum spends are as follows:

	TYPE OF PRODUCTION	MINIMUM RUNTIME	MINIMUM SPEND (PLN)
FICTION FEATURE FILM	co-production	70 min.	3,000,000 (in 2020)
	service		4,000,000 (from 2021)
FICTION SERIES	co-production	40 min. / episode	1,000,000
	service		1,000,000 / season
DOCUMENTARY FEATURE	co-production	40 min.	300,000
	service		300,000
DOCUMENTARY SERIES	co-production	150 min. / season	1,000,000 / season
	service		300,000 / season
ANIMATED FEATURE	co-production	60 min.	1,000,000
	service		500,000
ANIMATED SERIES	co-production	50 min. / 10 episodes / season	1,000,000 / season
	service		500,000 / season

Geography & Climate:

Poland is one of the biggest countries in Central Europe with an area of 312,679 sq km (120,726 sq mi). The country has an amazing and versatile natural environment. In the north, Poland reaches the Baltic Sea with its beautiful sandy beaches. Small lakes dot the entire densely-wooded northeast half of Poland with mountains lining it's southern border. There are four distinct seasons of the year in Poland. Spring arrives slowly in March. Summer begins in late May and lasts until the end of August with temperatures over 25 degrees. In September and October leaves on trees change colours and a beautiful period called Polish Golden Autumn ensues. Winter lasts from December through until late February or early March.



ESSENTIAL FACTS ABOUT POLAND

Travel:

There are 14 airports in Poland, as well as quick rail connections making it incredibly easy to get from one part of the country to another.

Time Zone:

UTC+1

Location:

Poland is located in Central Europe. It borders Belarus, Lithuania, Ukraine, the Czech Republic, Slovakia, Germany and Russia.

Visa Requirement:

Schengen Visa Required

Exchange Rates (2023 Est.):

4.30 PLN = \$ USD

4.55 PLN= 1 EUR

5.25 PLN = £1

1 PLN = 18 INR

Capital:

Warsaw

Official Language:

Polish

Fun Fact:

During World War II, the capital, Warsaw was almost completely destroyed and was entirely rebuilt.



ESSENTIAL FACTS ABOUT POLAND



The good condition of Polish cinematography is reflected in the ever increasing number of Polish productions, expanding share of Polish films in the market, as well as numerous international artistic successes.

Production

Annual Production Volume

about
50
full-length feature films

about
150
documentaries animations, shorts

Polish Budgets

350,000 - 6.5 MILLION EUR
full-length feature films

1.2 MILLION EUR
an average budget
of a full-length feature film

40,000 - 5.4 MILLION EUR
animation film

20,000 - 775,000 EUR
documentary film

Co-Productions

about **20-25**
international (including about 15
majority) co-productions produced
annually

up to **1.4** Million EUR
subsidies from the Polish Film Institute
for feature co-productions

137,000 EUR
an average subsidy from the Polish Film
Institute for minority co-production

5 bilateral co-production agreements:
France, India, Israel, Canada and New Zealand

On set

30-35 Days
shooting time for an average
full-length feature film

12 Hours
a standard shooting day,
including a 1-hour lunch break

11 Hours
lay-over time required between
the end of shooting and the start
of the next shooting day

6 Hours
the maximum length of a working
day for children under 16

Sundays and Bank Holidays payable
50-100% extra

There are no fixed rates within
the Polish Film Industry



WHY SERBIA?



ESSENTIAL FACTS ABOUT SERBIA

Filming Incentives:

Serbia provides a base cash rebate of 25% of Serbian applicable expenditures. In case the project has a budget of more than 5,000,000 Euros, the rebate rises to 30%.. The application for support may be submitted at the beginning of production. The film must not have content contrary to the moral, public order and public interest of the Republic of Serbia.

	TYPE OF PRODUCTION	MINIMUM RUNTIME	MINIMUM SPEND (EUR)
FICTION FEATURE FILM	co-production	70 min.	300,000
	service		300,000
FICTION SERIES	co-production	40 min. / episode	100,000 / episode
	service		300,000 / season
DOCUMENTARY FEATURE	co-production	40 min.	50,000
	service		50,000
DOCUMENTARY SERIES	co-production	150 min. / season	50,000 / season
	service		50,000 / season
ANIMATED FEATURE	co-production	60 min.	150,000
	service		150,000
ANIMATED SERIES	co-production	50 min. / 10 episodes / season	150,000 / season
	service		150,000 / season

Geography & Climate:

Serbia is a country situated at the crossroads of Central and Southeast Europe. The rugged mountains, hills and valleys of the Dinaric Alps slice through Serbia west of the Morava River, while the toothy-edged Balkan Mountains form its natural borders with Bulgaria and Romania. The highest point in Serbia is Deravica on Prokletije rising to 8,713 ft. (2,656 m) in the region of Kosovo. A fertile river floodplain (the Pannonian) stretches from Belgrade to the northern borders with Croatia, Hungary and Romania. Natural lakes in Serbia are rare as a result of the rugged terrain, and the ones that do exist, such as the glacial lake Palic, are mostly located in the north.



ESSENTIAL FACTS ABOUT SERBIA

Travel:

There is one main airport in Serbia located in the capital, Belgrade. The size of the country makes it easy to travel to anywhere within several hours.

Time Zone:

UTC+1

Location:

Serbia is located in southeastern Europe. It is bordered by Montenegro, Croatia, and Bosnia and Herzegovina to the west, Kosovo and the Republic of North Macedonia to the south, Bulgaria and Romania to the east, and Hungary to the north.

Visa Requirement:

30 Day Visa on arrival, 90 Days with valid Schengen, US, or UK visa.

Exchange Rates (2023 Est.):

108 RSD = 1\$ USD

118 RSD= 1 EUR

132 RSD = £1

1.3 RSD = 1 INR

Capital:

Belgrade

Official Language:

Serbian

Fun Fact:

Belgrade has been ranked the city with the best nightlife in the world.



ESSENTIAL FACTS ABOUT SERBIA

On set



30-35 Days
shooting time for an average full-length feature film

12 Hours
a standard shooting day, including 1-hour lunch break

There are no fixed rates within the Serbian Film Industry

The following is a line-item-by-line-item budget comparison of below-the-line costs between Hungary and Serbia. Below-the-line costs include the salaries of the non-starring cast members and the technical crew, technical equipment, location fees, and catering costs, etc, and shows that the same project is approximately 25% cheaper in Serbia.

Nobody makes films about the mundane nature of day-to-day life better than Serbs. You could take that statement and edit it to talk about any genre of film and the Serbs would still have to be in the conversation for that 'best' tag.

Production

Annual Production Volume

about **100** full-length feature films

about **300** documentaries animations, shorts

Co-Productions

about **60** international (mostly Hollywood and Indian pictures) co-productions produced annually

Serbian Budgets

Serbia is extremely cost-competitive, which is particularly important in the current financial environment. Shoots in Serbia cost an estimated 35% less than London and 36% less than Los Angeles. Line One of the table below shows the comparative budget of the same film in several different locations. Using the London production cost as a baseline, Line Two demonstrates that it would be 35% cheaper to film the same film in Belgrade than it would be in London.

Mid Budget Cash	Los Angeles	Vancouver	Sydney	Berlin	Budapest	Prague	London	Belgrade
Cost USD	22.2	21.6	21.7	22.1	17.2	17.4	21.5	14
% Compared to UK	+3%	5%	+1%	+3%	-20%	-19%	0%	-35%

	Hungary	Serbia
PRODUCTION STAFF	1,416,070	1,118,561
EXTRA TALENT	271,185	140,916
SET DESIGN	449,821	405,467
SET CONSTRUCTION	1,864,452	905,512
STRIKE	115,895	84,398
SET OPERATIONS	494,673	408,362
SPECIAL EFFECTS	1,184,528	596,270
SET DRESSING	643,211	556,688
PROPERTY	317,781	264,182
PICTURE VEHICLES	42,428	400,463
WARDROBE	743,786	445,862
MAKEUP & HAIRDRESSING	117,061	156,864
LIGHTING	511,008	491,415
CAMERA & VIDEO	1,044,931	830,467
SOUND	177,013	92,157
TRANSPORTATION	761,768	37,172
LOCATIONS	1,488,925	1,100,856
FILM & LAB	557,638	514,096
STAGE / FACILITIES	852,340	388,528
ANIMALS	12,802	6,323
SECOND UNIT	1,038,240	645,292
SPLINTER UNIT	91,740	76,847
ARIAL UNIT	474,795	474,795
MARINE UNIT	911,753	911,753

Fringes	789,366	688,271
---------	---------	---------

	\$ 17,073,210	\$ 12,341,526
--	---------------	---------------

Serbian Savings:		\$ 4,731,684
------------------	--	--------------

A photograph of a long, arched tunnel with a reflective floor. The tunnel is illuminated with warm, orange light, creating a strong sense of perspective and depth. The arches are made of stone or concrete, and the floor is highly polished, reflecting the light and the structure of the tunnel. The text "WHY SPAIN?" is overlaid in the center of the image.

WHY SPAIN?



ESSENTIAL FACTS ABOUT SPAIN



120 Years of Film History

EXPERIENCE

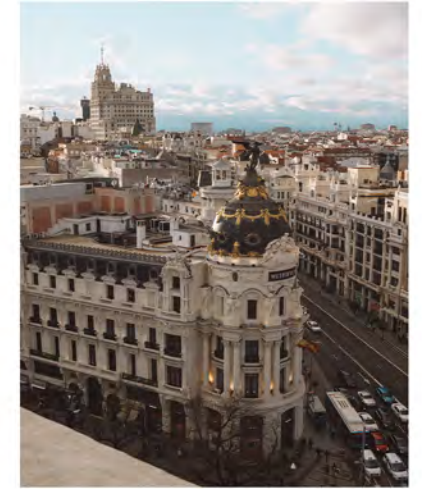
Spain has a long history of hosting international film productions. Samuel Bronston maintained a studio in Madrid in the early '60s where blockbusters such as *El Cid* and *Doctor Zhivago* came to life. These days, a rising number of foreign television, animation, and advertising projects are being carried out in Spain as well.



**48 UNESCO World
Heritage Sites**

LOCATIONS

The forces of history and nature have made Spain an unparalleled location for motion picture production. No other country offers the same level of geographic, cultural, and architectural diversity.



**300 Days of Sunshine
a Year**

CLIMATE

The long hours of sunlight and mild temperatures found in much of Spain year-round allow producers to plan accurate production schedules. However, with ten climate zones, the country offers verdant, misty, and snow-capped settings as well. Spain's vast range of locations cast every kind of light imaginable.



ESSENTIAL FACTS ABOUT SPAIN



**European Leader in
Annual Film Production**

INDUSTRY

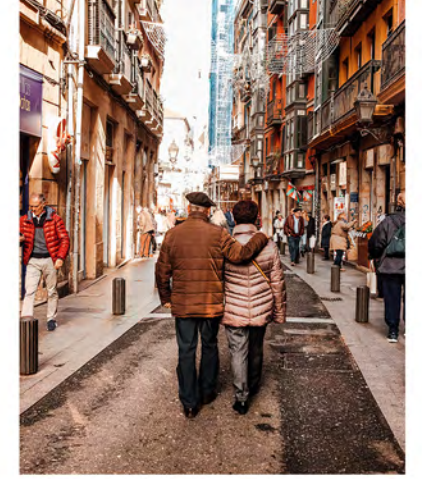
Spain produces and exports every kind of audiovisual content. The Spanish audiovisual industry maintains a consolidated presence in the official Audiovisual From Spain stand at major international sector trade fairs. Spain is becoming an international leader in animation and cutting-edge film technologies



**Top 10 Country
for Infrastructure**

TRAVEL

Spain is part of the Schengen Area. Visas can be obtained in app. 15 days. Spain boasts the second most extensive high-speed rail network in the world, and the largest highway network in Europe. More than 130,000 ships dock at the 46 state-owned ports located along Spain's Atlantic and Mediterranean coasts every year and 250 airlines operate flights in and out of its 48 airports, carrying over 158 million passengers a year. Most destinations within Spain are just a 1-hour domestic flight away.



**80 Million
Tourists a Year**

HOSPITALITY

Spain's tourism sector is fully equipped to satisfy the needs of every kind of incoming guest. As the third most visited country in the world (with the influx of an estimated 82 million arrivals in 2018 alone), Spain offers one of the best arrays of overnight accommodation in the world. Its 16,000 hotel facilities have the combined capacity to lodge 1.5 million guests.



ESSENTIAL FACTS ABOUT SPAIN

Incentives

The attraction of Spain for foreign film and television productions lies not only in the calibre of its internationally renowned professionals, unbeatable locations, natural conditions and wonderful climate, but also in a new tax framework that improves on the existing system of incentives for cinema industry.

National Level	Canary Islands	Navarre
20%	40%	35%
<p>Basis Expenses for creatives (with tax residence in Spain or any EU member state) up to €100,000 per person. Expenditure on technical industries and other suppliers.</p> <p>Requirements The eligible expenditure incurred in Spain must be at least €1 million. The amount deducted may not be greater than €3 million for costs incurred in Spain. A production partner with tax residence in Spain. The total amount of this deduction, together with any other aid received by the taxpayer, may not exceed 50% of the cost of the production.</p>	<p>Requirements The eligible expenditure incurred in the Canary Islands must be at least €1 million, except for animation and post-production, in which case it must be at least €200,000. A production partner with tax residence in the Canary Islands. The amount deducted may not be greater than €5.4 million for costs incurred in the Canary Islands. The total cost of production must be at least €2 million and eligible expenditure may not exceed 80% of the cost of production. The total amount of this deduction, together with any other aid received by the taxpayer, may not exceed 50% of the cost of the production.</p>	<p>Requirements Minimum of one week filming in Navarre (interiors or exteriors). The total cost of production may not be greater than €3 million. A production partner with tax residence in the Navarre region. The total amount of this deduction together with any other aid received by the taxpayer, may not exceed 50% of the cost of the production.</p>

A wide-angle photograph of the London skyline from the River Thames. The London Eye, a large white Ferris wheel, dominates the left side of the frame. Behind it, modern skyscrapers are visible. To the right, the County Hall, a grand classical building with a central clock tower, stretches across the middle ground. A white tour boat is on the water in the foreground. The sky is a deep blue with wispy white clouds. The text 'WHY THE UK?' is written in a large, white, serif font across the upper right portion of the image.

WHY THE UK?



ESSENTIAL FACTS ABOUT THE UK



Film Pioneers

EXPERIENCE

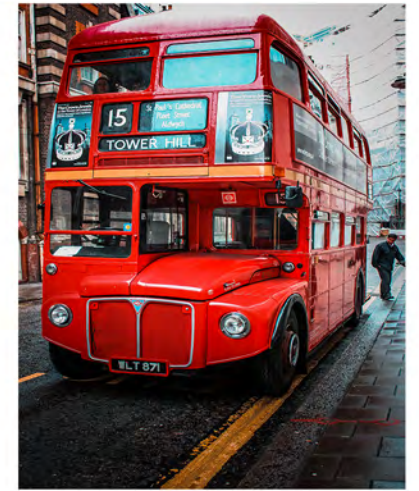
The United Kingdom has had a significant film industry for over a century. The UK has created some of the most influential and celebrated cinema and television in the world. UK filmmakers are recognised around the world for their craft, originality and creativity.



Diverse Architecture

LOCATIONS

The UK offers both state of the art studio facilities suitable for the biggest movie productions and a variety of locations that encompass gritty urban scenes, unique historical sites and attention-grabbing natural backdrops. The HBO series, Game of Thrones, made Northern Ireland its production home and big budget movies filmed in the UK include Avengers: Infinity War, Gravity and recent Star Wars movies. The UK is home to some of the most magnificent studios including Shepperton, Pinewood and others.



**Beautiful Even
When It's Gloomy**

CLIMATE

The UK is mostly under influenced by the maritime polar air mass from the north-west. Northern Ireland and the west of Scotland are the most exposed to it, which brings cool moist air; the east of Scotland and north-east England are more exposed to the continental polar air mass which brings cold dry air. The south and south-east of England are the least exposed to polar air masses from the north-west, and on occasion see continental tropical air masses from the south, which bring warm dry air in the summer. On average, the temperature ranges from 18 to 25 °C.



ESSENTIAL FACTS ABOUT THE UK



**The Europe-Hollywood
Connection**

INDUSTRY

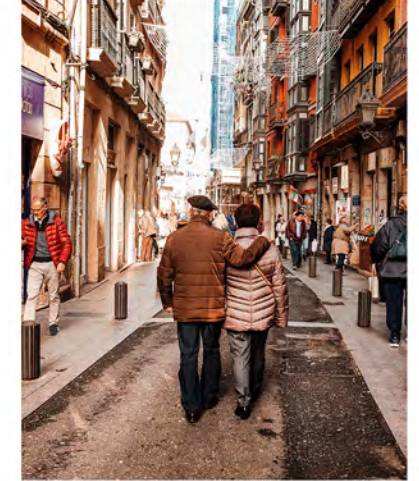
With 255 films produced last year, the film industry in the UK has a net revenue of 3.45bn GBP. Across all films shot in the UK, the average film budget was £3.2 million. 43% of films shot in the UK in 2013 cost less than £500,000



Speedy Connections

TRAVEL

England is no longer part of the European Union and not a part of the Schengen zone. As such it requires UK visas that can be obtained from the respective Embassy and consulates. It is usually processed within 15 days. International airports in London, Liverpool, Edinburgh. Manchester, Bristol, Glasgow, as well as quick rail links between major cities, make travel in the United Kingdom a breeze.



**Film Location-
Related Travel**

HOSPITALITY

Great Britain is famous for its grand castles, stately homes and pretty villages - perfect settings for period dramas, and some have become the most iconic film locations in the UK, from Harry Potter's Alnwick Castle to Pride and Prejudice's Chatsworth. The UK boasts an array of hotels ranging from ultra-modern establishments to stays in medieval castles.



ESSENTIAL FACTS ABOUT THE UK

Incentives

The UK's film and high-end television tax reliefs are widely recognised as the most transparent, inclusive and reliable production incentives in the world.

National Level

25%

Value

For all British qualifying films of any budget level, the Film Production Company can claim a payable cash rebate of up to 25% on UK qualifying expenditure. The Tax Relief is capped at 80% of the core expenditure i.e. even if you have 100% UK-qualifying expenditure, tax relief is only payable on up to 80%. There is no limit on the budget of the film or the amount of relief payable within the 80% cap.

Minimum UK expenditure

At least 10% of the film's core expenditure must be UK expenditure.

Included costs

UK-qualifying production expenditure is defined as expenditure 'used or consumed' in the UK i.e. costs incurred by the FPC on filming activities (pre-production, principal photography, visual effects and post production) that take place within the UK, irrespective of the nationality of the persons carrying out the activity. Above-the-line, including actors and directors, is included, irrespective of nationality. Core expenditure incurred at a later stage on a project where there are residuals' to be paid will attract further relief; for example further payments to actors and directors.

Regional Funds

Varying

Isle of Man Media Development Fund

The Isle of Man Media Development Fund has a range of funding options available to UK Film and TV productions as well as games, including equity finance investment, gap finance and discounting of the UK tax credit and pre-sales of a project. The Fund has an evergreen budget of £25m and is administered by Pinewood Pictures.

Welsh Government's Media Investment Budget

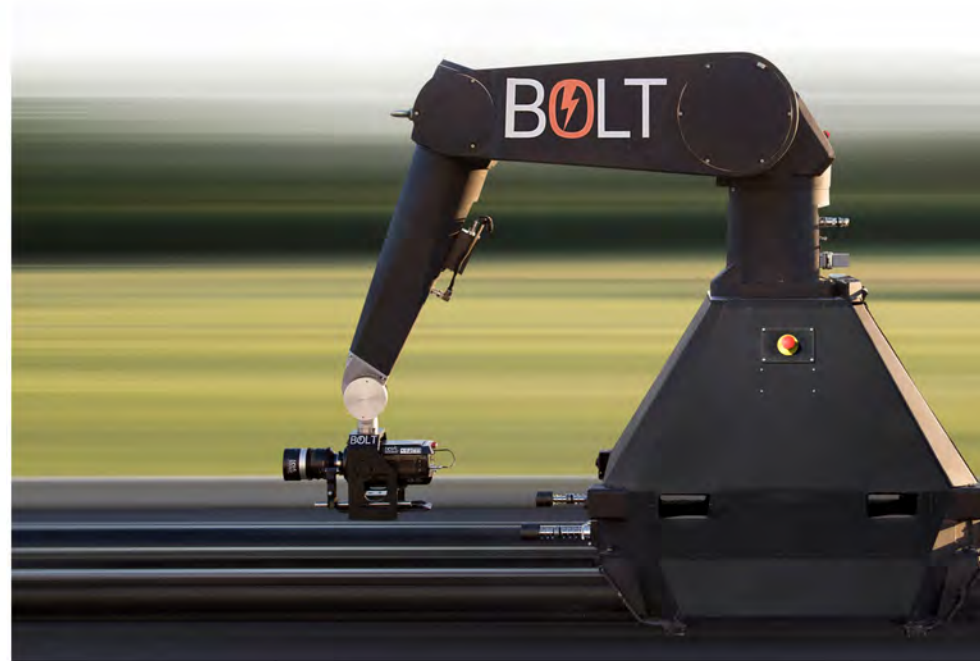
The Media Investment Budget is a fund of £30m to be used on film and TV productions filming in Wales and incurring Welsh spend. The Pinewood Pictures-administered Fund targets film and television projects that can shoot at least 50% of principal photography' in Wales.

EQUIPMENT

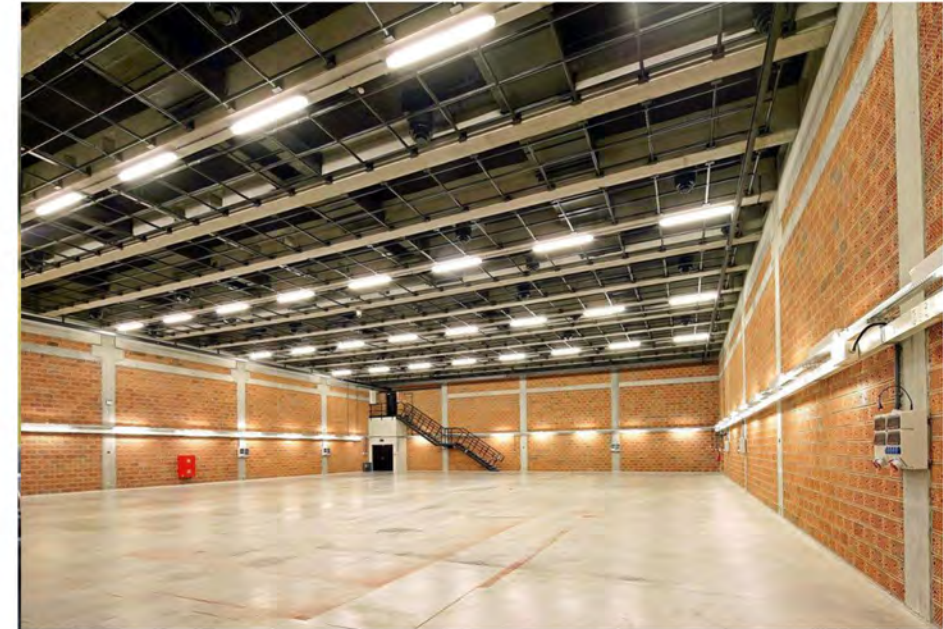
Russian Arm



Motion Control



Studios



Equipment may be available anywhere, but we strive to use only top class gear to achieve the best quality visuals rather than to succumb to mediocrity. With original motion control devices that can compliment high speed phantom cameras even at the highest frame rates, Russian arms that can deliver at speed and stability and studios with a full backlot, we strive to deliver the best.

RUSSIAN ARM



The Legendary and Academy Award winning Russian Arm is the most flexible and stable camera system on the market. The high speed mobile crane is mounted on the roof of a Porsche Macan, or Mercedes ML providing you with high-level dynamic shots

ULTRA ARM



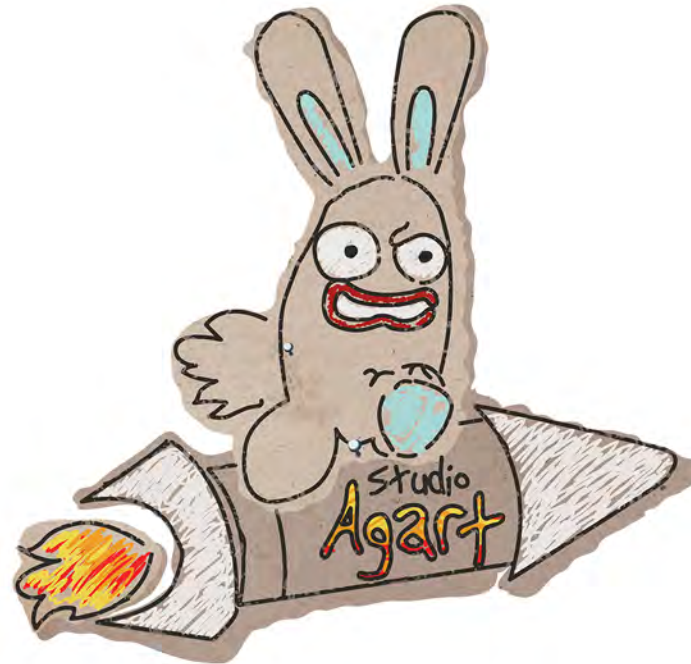
The most versatile remote arm in the world - ULTRA - is the lightest, most portable remote arm system ever conceived. Weighing just 190lbs unloaded, it is the only 12' arm capable of flying aschecked baggage. The ULTRA can take a payload of 55lbs and reach speeds of 75+ mph.

MOTION CONTROL BOLT



The fastest camera robot in the world! Shoot commercials, film, television and tabletop photography with MPMC's Bolt high speed camera robot. Three of those in one studio in Warsaw, Poland, coupled with Phantom Veo cameras will get the job done on the most demanding projects!

CONTACT



Telephone: +48 22 349 26 49
E-mail: studio@studioagart.com

